

The Challenges of the Regional Development of Post-Mining Regions

Karsten Feucht, IBA-Studierhaus

- Change-Challenges: Exceptional problems > Informal methods
- A few exemplary projects
- The 10 principles concerning the treatment of post-mining Landscapes



see

The IBA study house



see

IBA-Study-house

Investigation
Study
Projects
Conferences
consulting



IBA-Study-house

postgraduate trainings

b-tu Brandenburgische Technische Universität Cottbus - Senftenberg

MD post-mining development

Weiterbildung mit Zertifikatsabschluss
STADTENTWICKLUNG & INDUSTRIEKULTUR
 6. Oktober — 12. Dezember 2014

WEITERBILDUNG

SCHWIMMENDE ARCHITEKTUR
 Bauen am und auf dem Wasser

Sommersemester 2015
 0. April - 31. Juli

Teilmodule:
 Freitag/Samstag monatlich

Optional:
 Exkursion in die Niederlande

Zuschluss:
 Universitätszertifikat nach erfolgreicher Teilnahme
 an 4 Modulen 1 - 4 und entsprechendem Leistungs-
 nachweis; anerkannte Weiterbildungsmaßnahme
 nach der Architekten- und Ingenieurkammern.

Anmeldung
 bis 02.03.15

www.b-tu.de

b-tu Brandenburgische Technische Universität Cottbus - Senftenberg

IBA-Studierhaus see
 Lausitzer Seenland e.V.

Achtung !
IBA-Land
 Betreten und Befahren
 ausdrücklich erwünscht

Weiterbildung mit Zertifikatsabschluss
**AUSSERORDENTLICHE
 PLANUNGSINSTRUMENTE**
IBA, BUGA, LAGA, INA etc.

5 Teilmodule Freitag/Samstag, monatlich
 Wintersemester 2015/16

www.b-tu.de

b-tu Brandenburgische Technische Universität Cottbus - Senftenberg

IBA-Studierhaus see
 Lausitzer Seenland e.V.

Weiterbildung mit Zertifikatsabschluss
ENERGIEWENDE VOR ORT
*Regionale Effizienz, Gestaltung und
 Akzeptanz regenerativer Energien*

5 Teilmodule Freitag/Samstag, monatlich
 Wintersemester 2015/16

www.b-tu.de



WISSENSSPEICHER VOLLER LEBEN A LIVELY STOREHOUSE OF KNOWLEDGE

// Die Welt ist in Großräschen zu Gast! Das IBA-Studierhaus wird seit 2013 rege von nationalen und internationalen Studenten- sowie Fachbesuchergruppen zu unterschiedlichen Themen und Veranstaltungen genutzt und ist auf diese Weise eine Bereicherung für die Lausitzer Region. // Großräschen is happy to welcome guests from the world over. Since 2013 the IBA Study House has been used by national and international student groups as well as professionals for a variety of events and topics and consequently it has become an enrichment for the Lausitan region.

>> We, students of Anhalt University of Applied Sciences: Thank you IBA for kind hospitality, education and excellent projects! <<

STUDIENDE AUS CHINA, IRAN, VIETNAM, KENYA, INDIEN, SYRIEN UND DEUTSCHLAND



>> Das IBA-Studierhaus hat mir sehr viel gegeben. Ich konnte flexibel arbeiten und es gibt Bücher und Filme, die man anderswo nicht finden kann. Die Zimmer und die Arbeitsbedingungen sind perfekt. Die IBA-Mitarbeiter haben mich sehr inspiriert, danke! <<

LILLA SZABO, UNIVERSITÄT BUDAPEST

Damaged landscapes



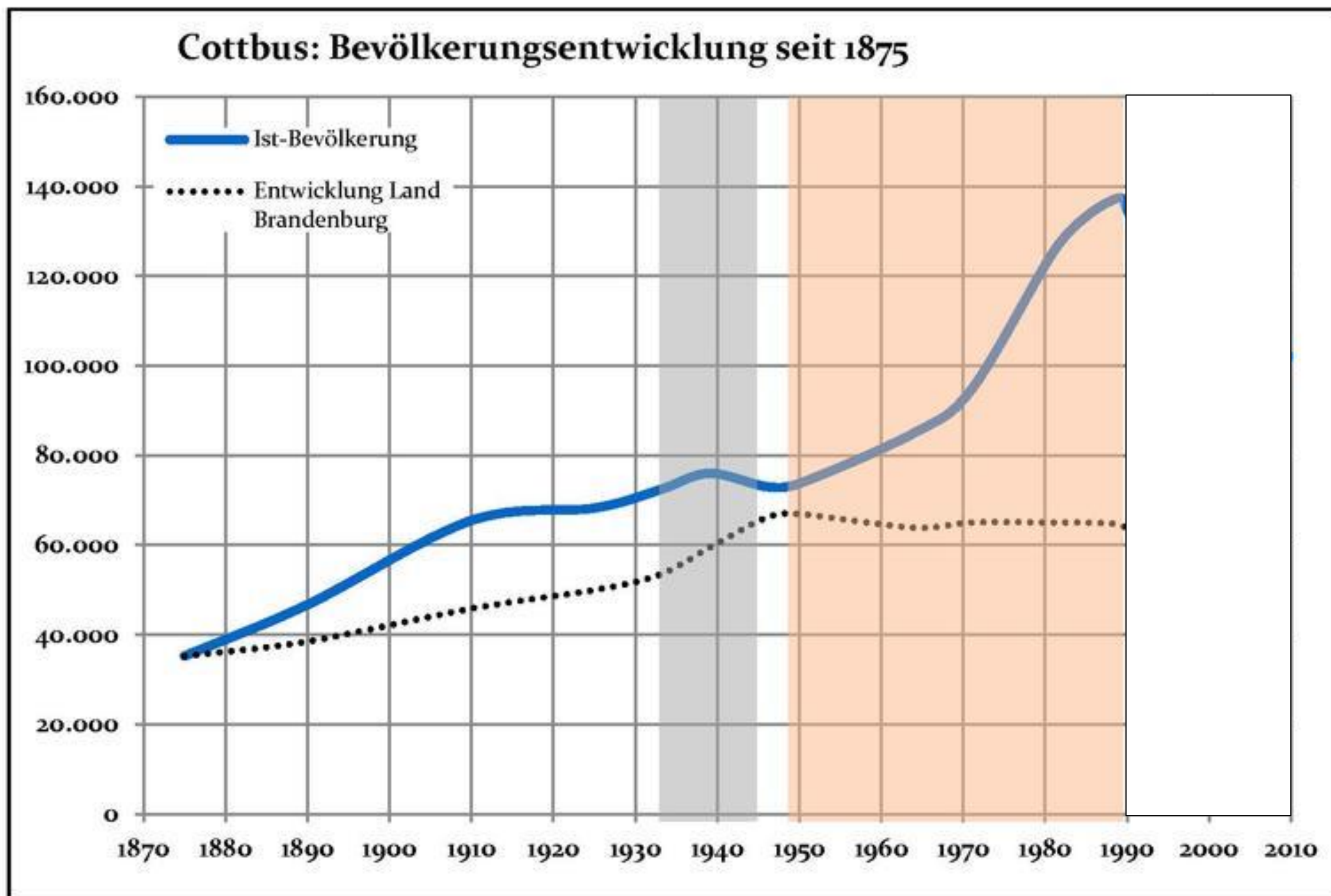
Old factories run out of use



Unemployment



Population decline



City dismantling

„here we build a grassland“



„Inn Hope“



The complex challenge of the postmining reconversion



- Who develops a general vision for the region?
- Who moderates the long and conflictive process?
- Who participates and integrates the population?
- Who looks out for interdisciplinary ideas of re-use?
- Who organizes help and experience from outside?

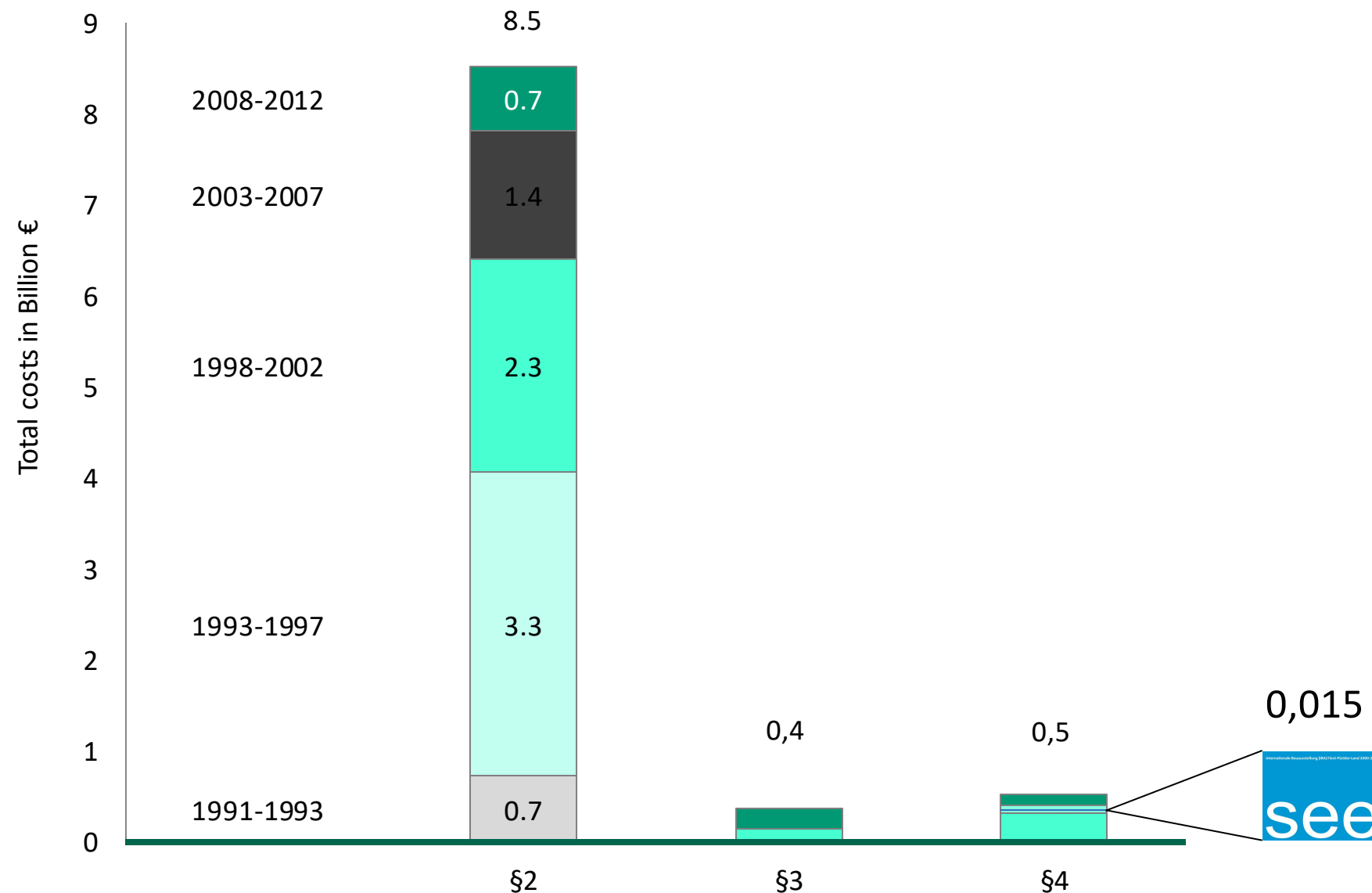
Legal and financial framework of the rehabilitation program for East-Germany and the extra value through IBA

Division of tasks according to administrative agreement

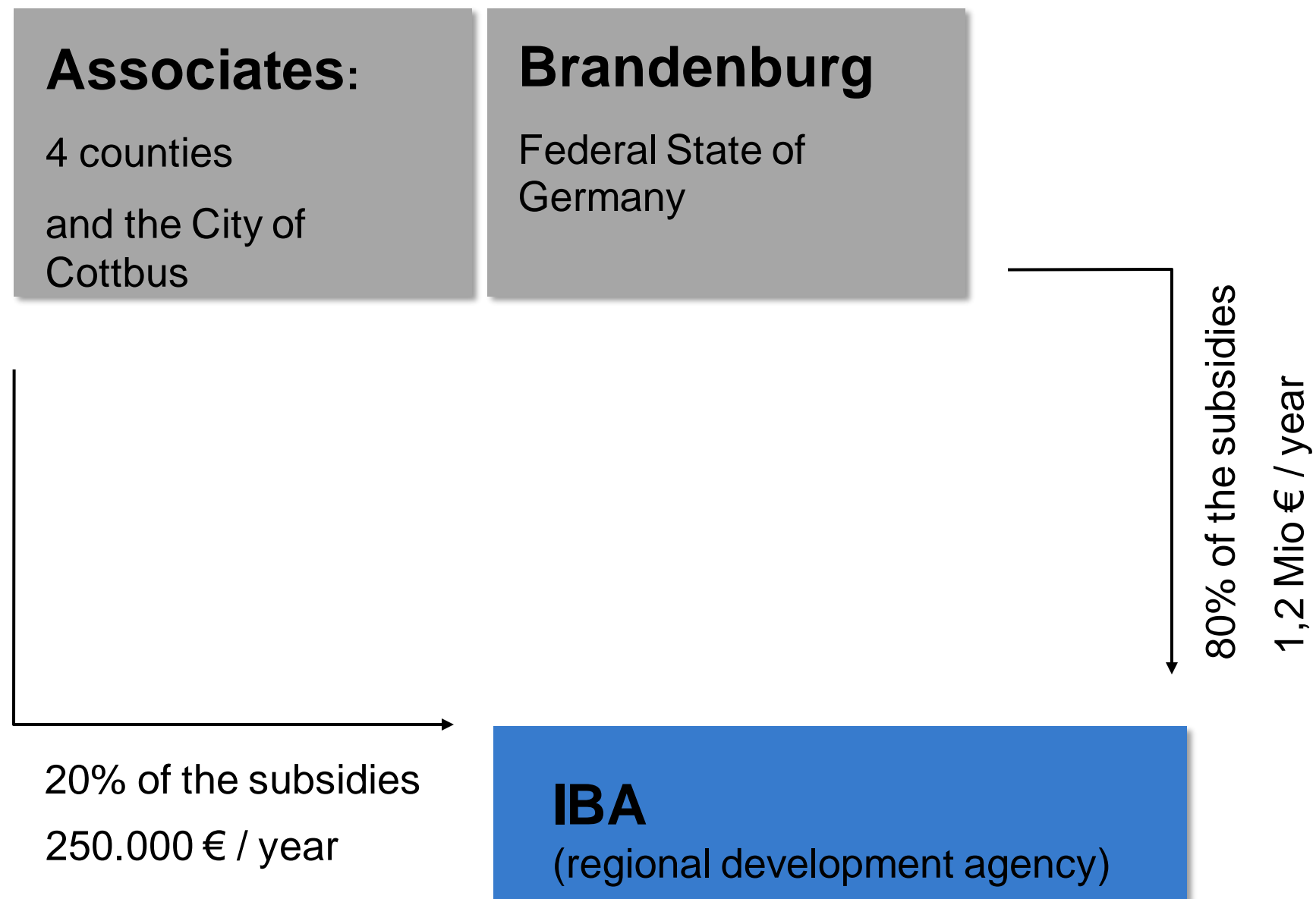
§ 2 Clear legal obligation according mining code (federal act on mining)

§ 3 Disputed legal obligations according to other indirect costs

§ 4 Additional governmental support for measures to increase the follow-up standard



The organization of IBA



Perception-workshops®

create consciousness about the perception-process and help to discover the qualities of the space



Cultural Integration and social Participacion



Information, innovative tourism, international exchange of experiences

Gesendet: Donnerstag, 20. August 2009 15:26

An: Karsten Feucht

Betreff: Betf.: AW: tour durch den tagebau welzow

Dear Mr Feucht,

First of all it was great fun to participate in this kind of 'safari'. So if that is the first goal, it has been reached and in between - without giving me the idea to go to class - I got all the information on the 'Tagebau-project' as an extra.

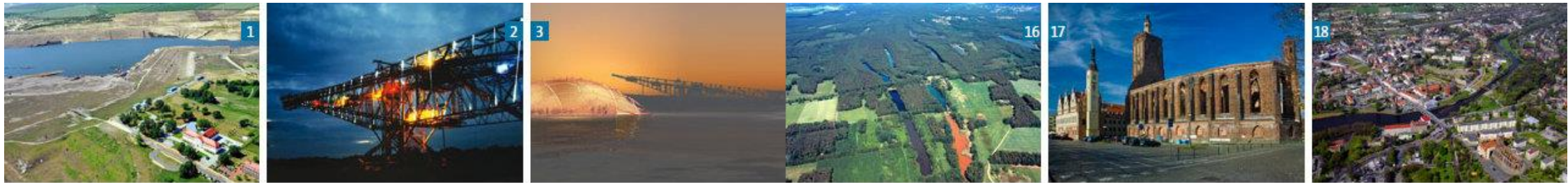
More striking to me was the fact that you were able to change a problematic regional situation (and let's be clear, the effects on the communities were clearly demonstrated) in a specific regional 'product' that brings money and additional jobs to your region. This creative process is the most important thing you have shown me. You were really able to see with other eyes to your region and created touristical 'chances', where others only would have seen 'problems'. In regional development we need to develop new products that sell our region and I think you have developed something special. I can only congratulate you with this and wish you all the success needed.

With kind regards,
Doede Sijtsma

Bureau Buitenland / Department of foreign affairs
Provincie Gelderland
Postbus 9090
6800 GX Arnhem



The 30 exemplary projects of IBA



Die 30 IBA-Projekte
The 30 IBA Projects

Räumliche Zuordnung und Projektamen siehe Karteneinleger.
See insert for exact locations and project names.



The strategic approach of IBA

regional level

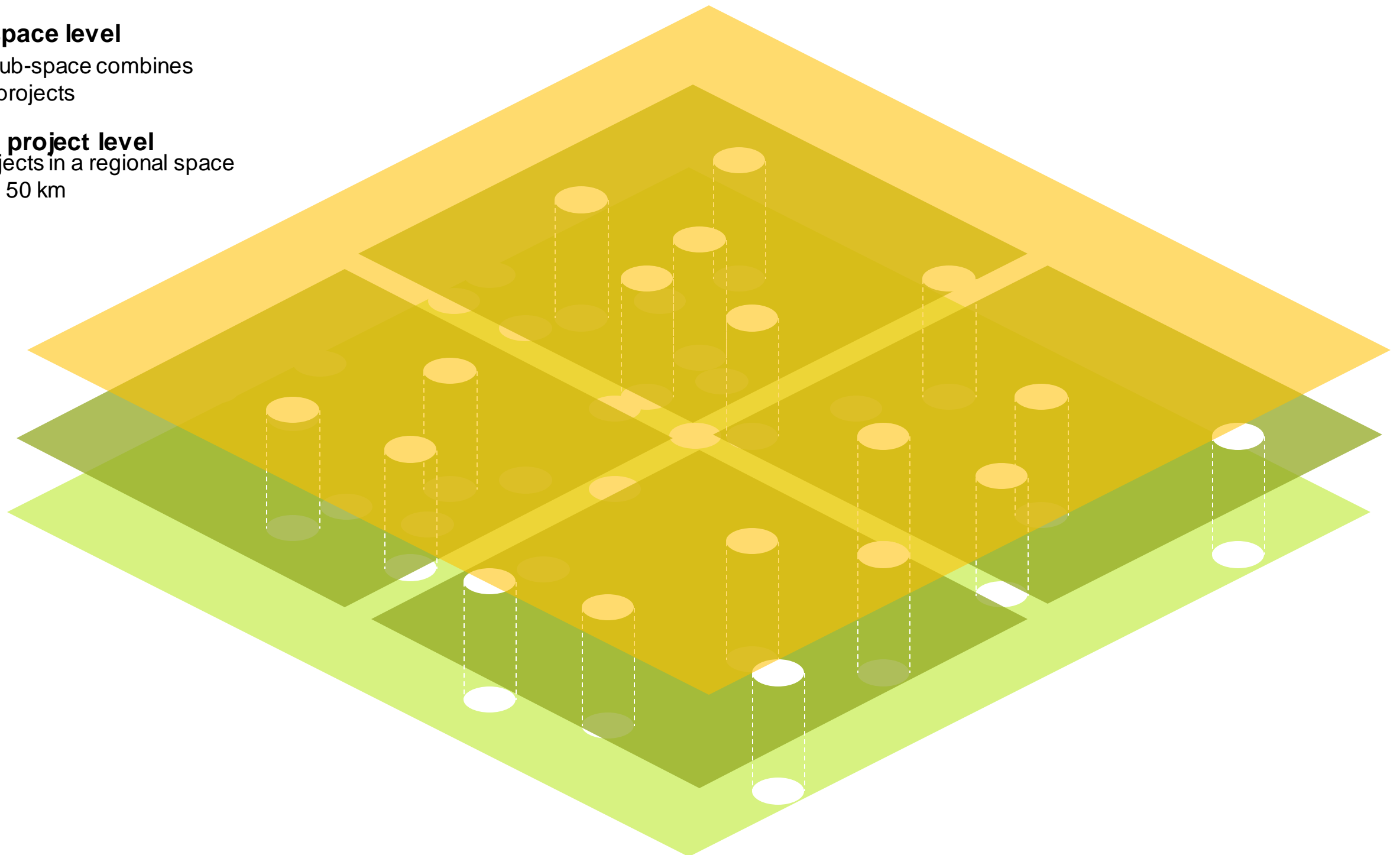
total action space in IBA region

sub-space level

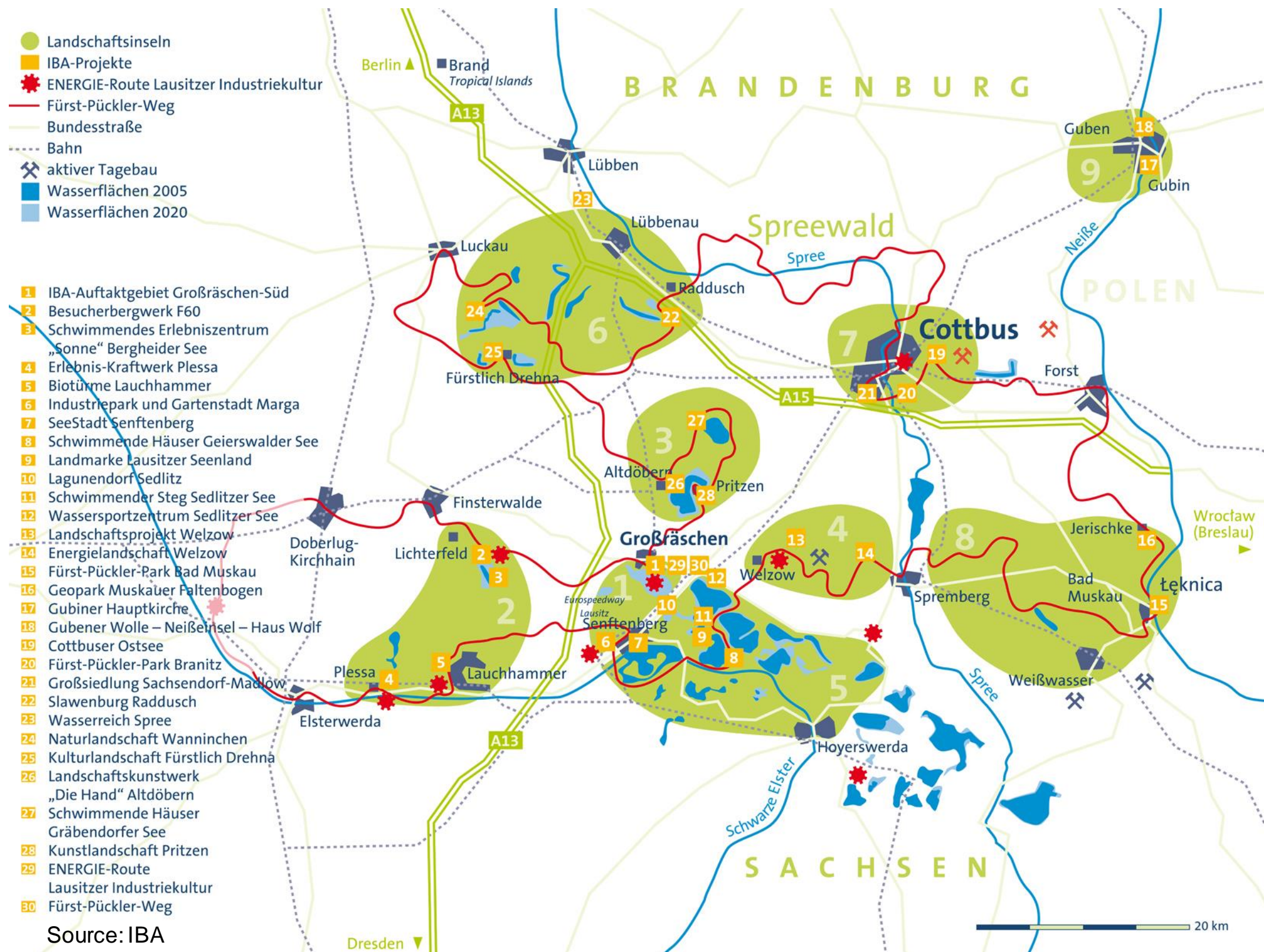
each sub-space combines
3 to 5 projects

Local project level

30 projects in a regional space
of 70 x 50 km



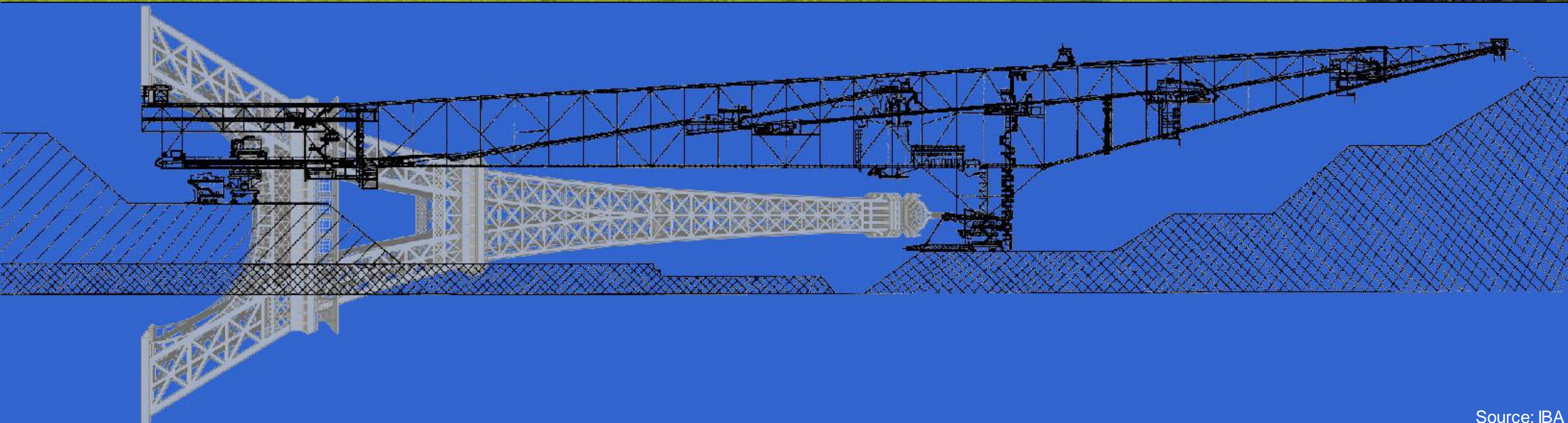
The strategic regional plan of IBA



F60



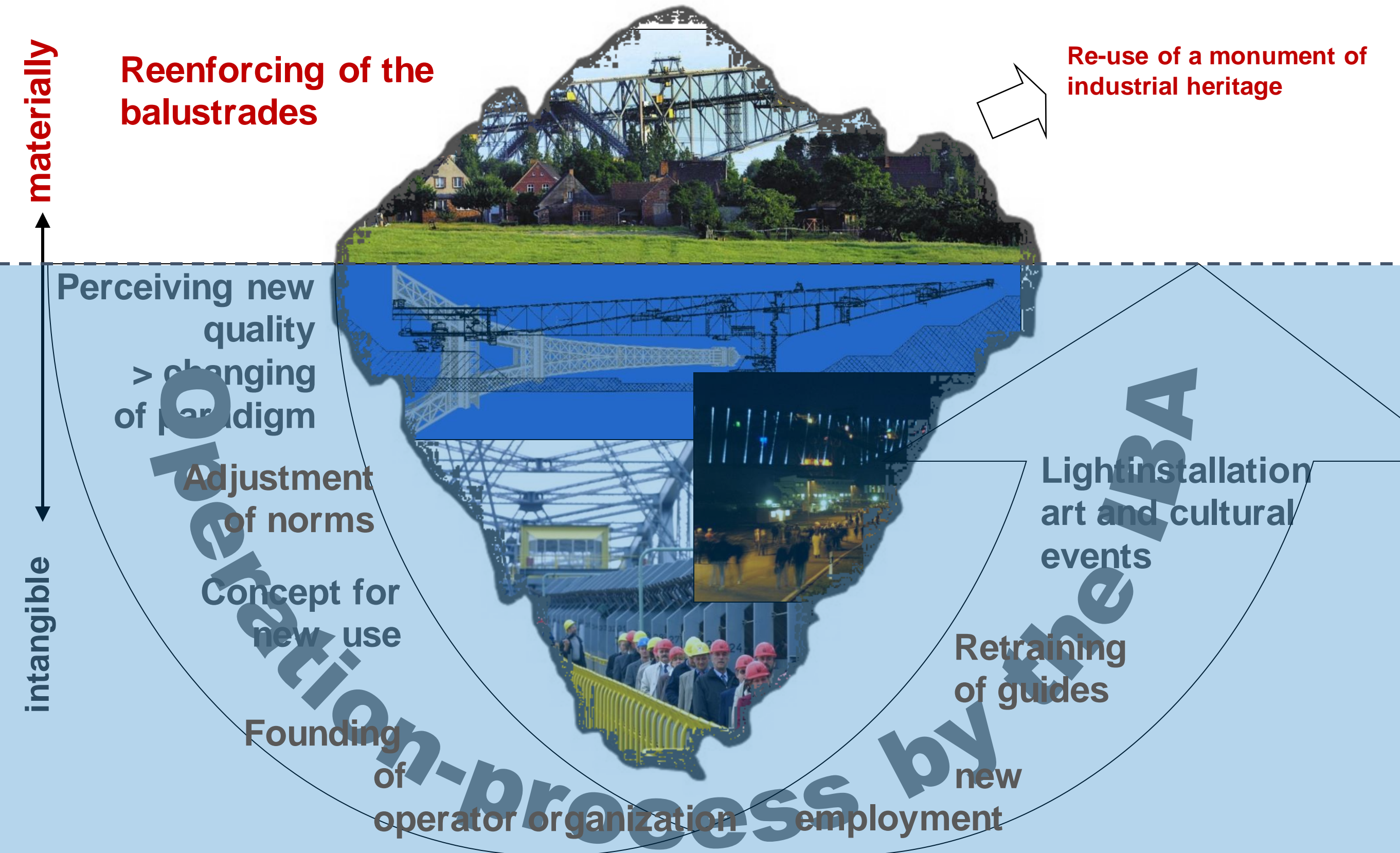
Source: Rainer Weisflog



Source: IBA



Strategic attitude insted of pushing through



Energy as innovation field for old briquette factory LOUISE

Business fields of the "Energy Farm"

Holz-Heizkraftwerk

- a) Nahwärmenetz plus Holzheizkraftwerk
- b) Heizkraftwerk mit Restholz versorgt

Holzpresse

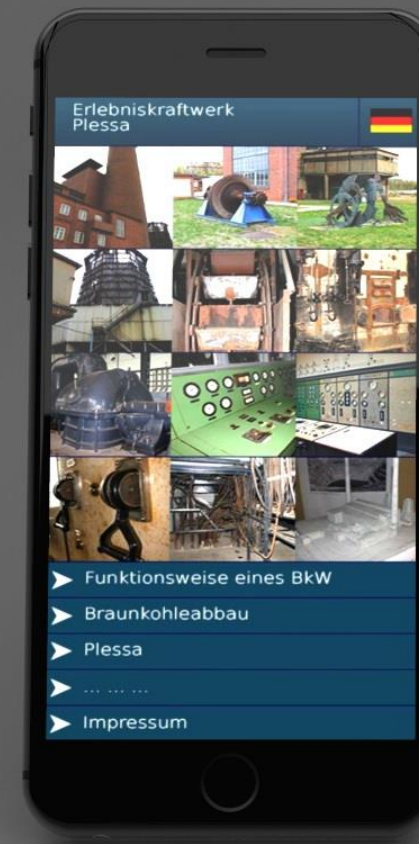
- a) Holzpresse auf Restholzbasis
- b) Produktion von Holzbriketts (mit Show Presse)

Hydrothermale Carbonisierung (HTC)

- a) Biokohleproduktion
- b) Bau einer Presssanlage



The old Power plant Plessa – sustainable protection by digitalization



Developing attractive landscape: Landmark in lake district



Innovation in lakeland: new harbour of Senftenberg

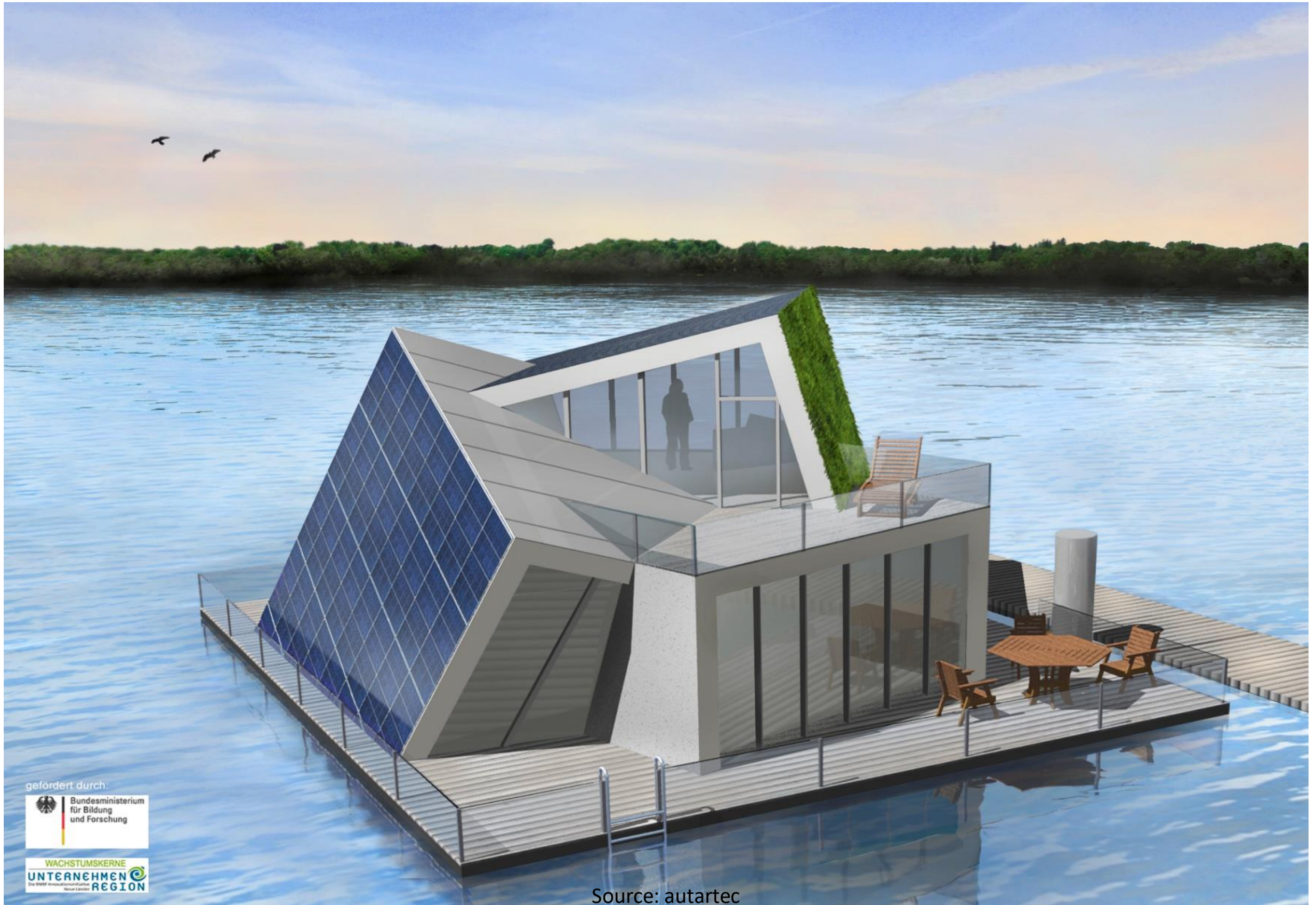


Project swimming architecture in new lakes



The autartec® Project

Demonstrator of a totally self-sufficient house on the water

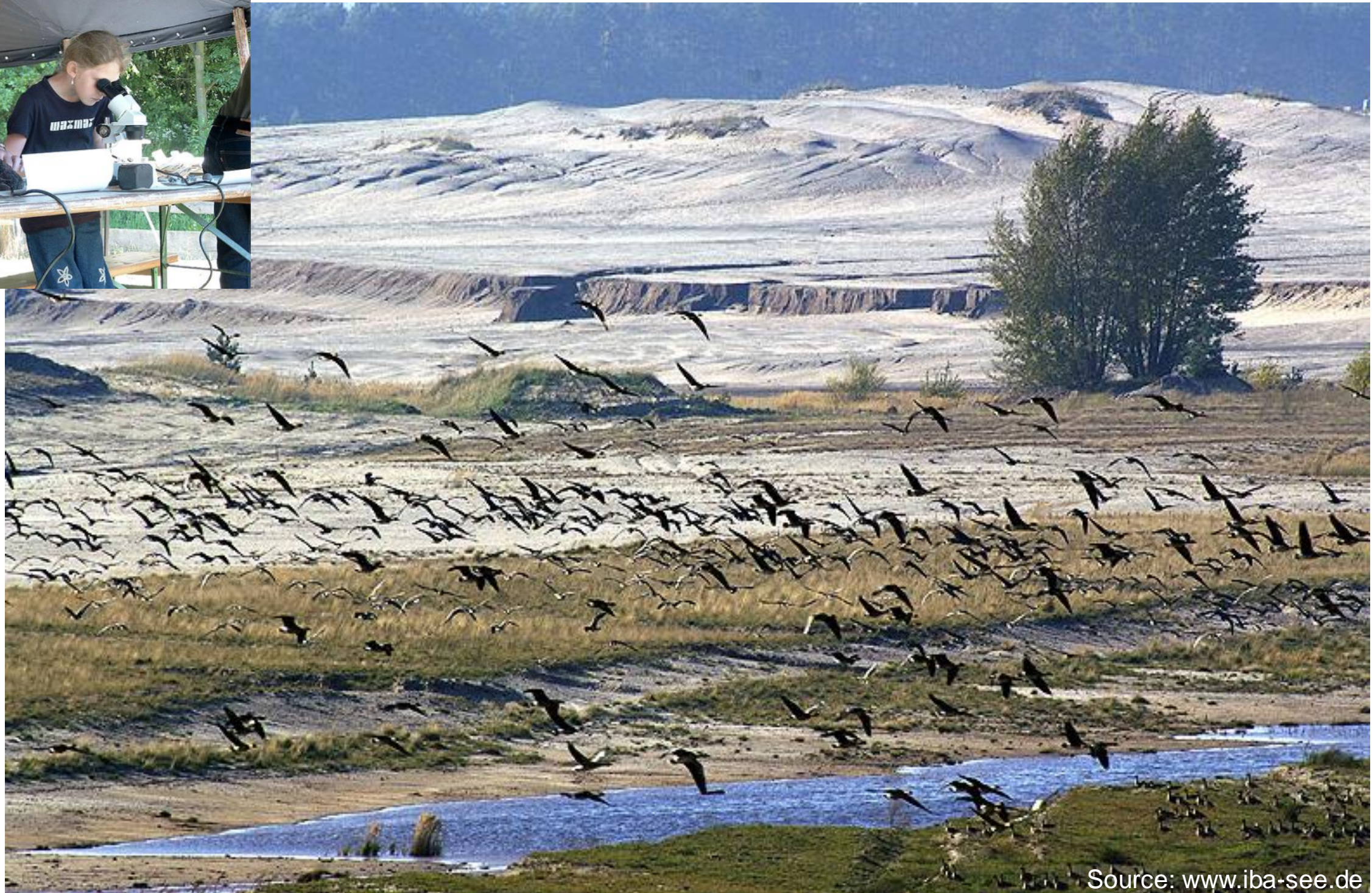


gefördert durch:



Source: autartec

Restoring of biodiversity and natural parks



Innovative recultivation of post-mining landscape with wine-yards



Development of energy landscapes



Source: ARGE hoch 3

IBA-Terrasses: „the most extraordinary edge of civilization in the world“



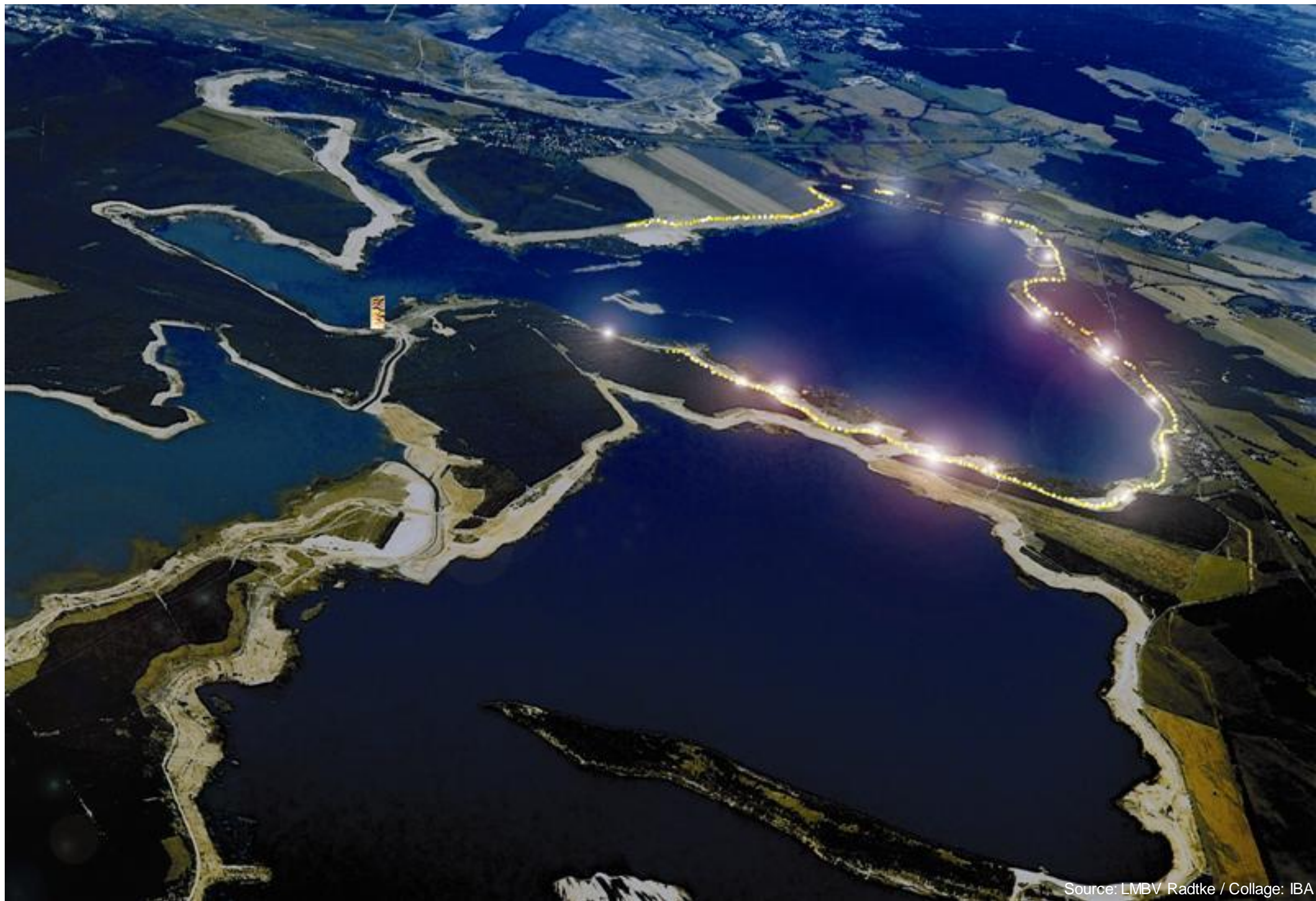
IBA-Terrasses:

**development as think-tank
for structural change**

- Coworking space
- Startups
- Landscape-Bauhaus
- Research and Development



Social art: „Paradies 2“



Social art: „Paradies 2“



Structural concept of IBA

Identität bewahren



Zukunft gestalten



Zwischenlandschaft erleben



Integration of informal planning-tools at IBA

Formal planing

organized hierarchically

enforced by the
administration

Legally founded

mandatory

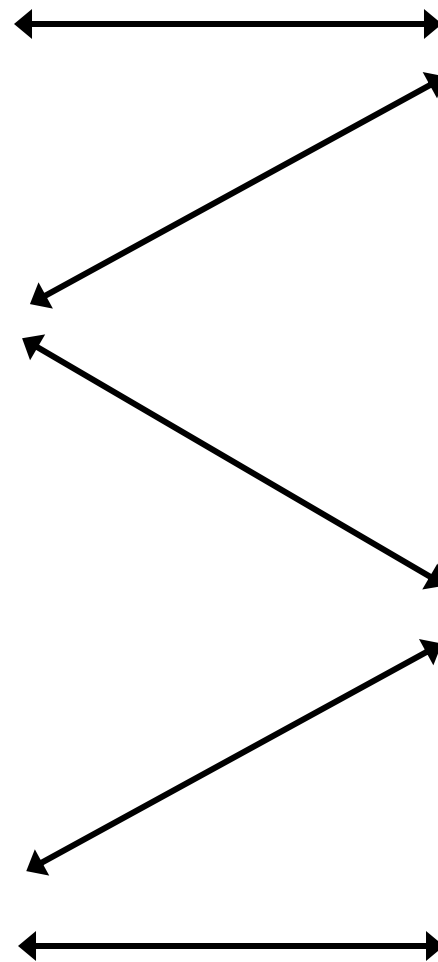
Informal planing (IBA)

Porcess orientated

Moderation, network,
concept, competition

Based on quality and
innovation

Communication, forums,
participation

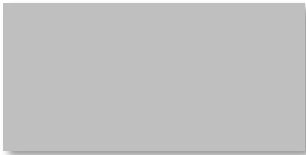


Strangeness and innovation as a principle

1997 1998 1999 **2000** 2001 2002 2003 2004 2005 2006 2007 2008 2009 **2010** 2011 2012

preparation

feasability study, financing, develop-
ment of mangement structure



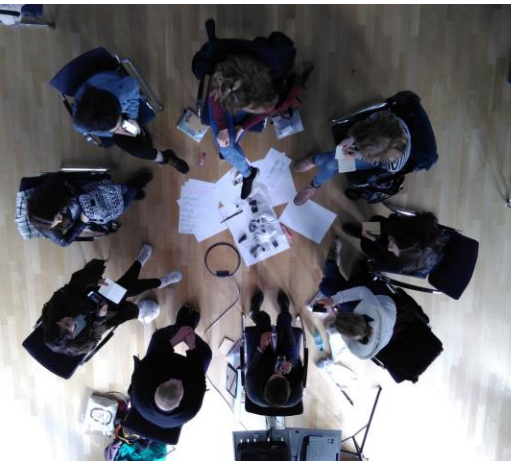
implementation

Project development, topics per
year, final presentacion



liquidation

end of action



Source: transform / IBA

perceptcion workshops® - tell salons - history workshops - excursions - round tables - competitions

Communication and consensus instead of instruction



10 principles concerning the treatment of post-mining Landscapes

- 1. Setting an example**
- 2. Using resources**
- 3. Fostering identity**
- 4. Broadening the planning horizon**
- 5. Shaping the process**
- 6. Allowing for creativity and innovation**
- 7. Generating pictures**
- 8. Ensuring transparency**
- 9. Building the organizational structure**
- 10. Taking responsibility**

Thank you

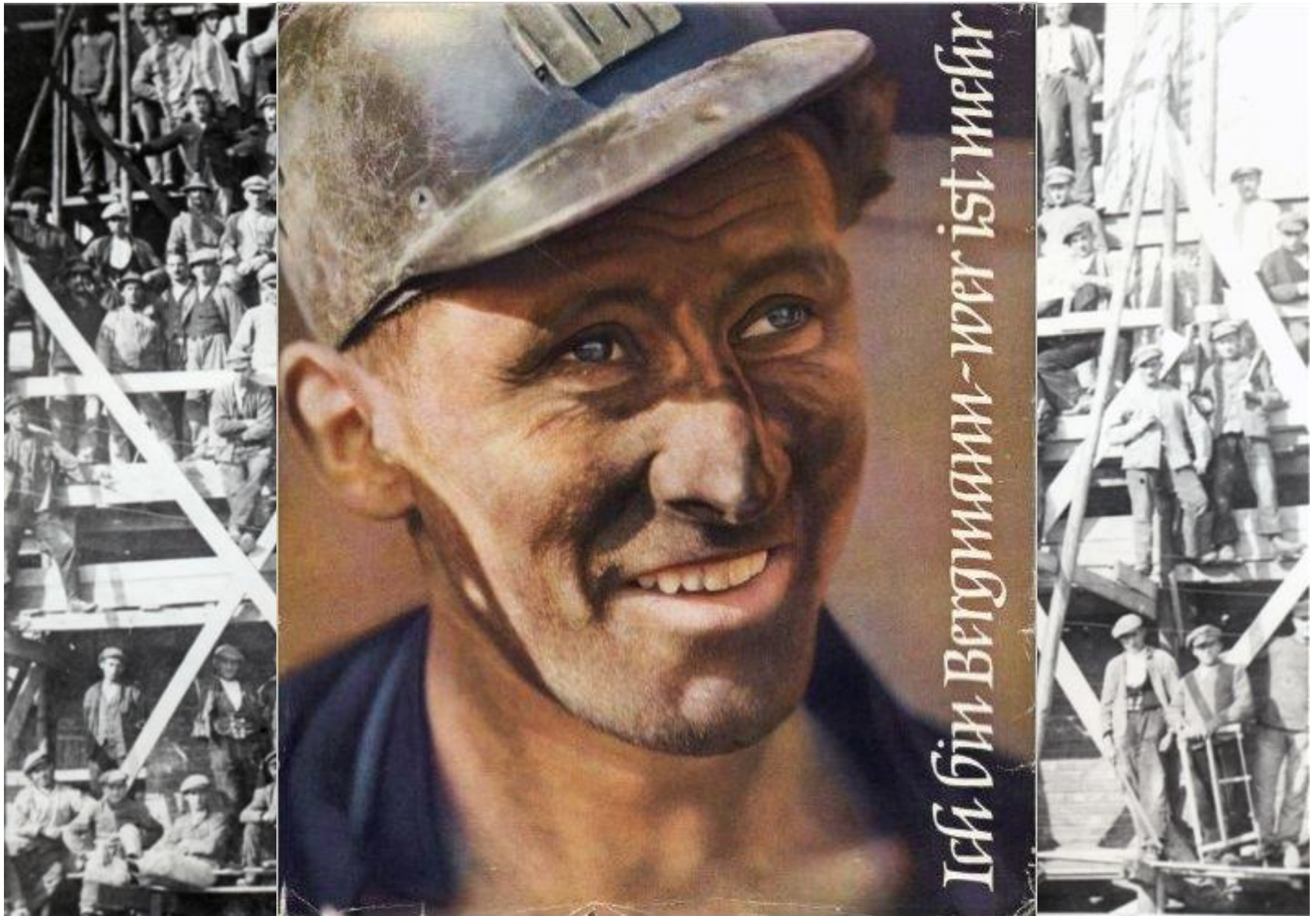


Karsten Feucht

www.iba-see.de.de



“I’m miner – who is more?”



Economic break due to german unification

Transformation of brown coal mining in East-Germany

1989 1995 2016

Year production (Mio t)

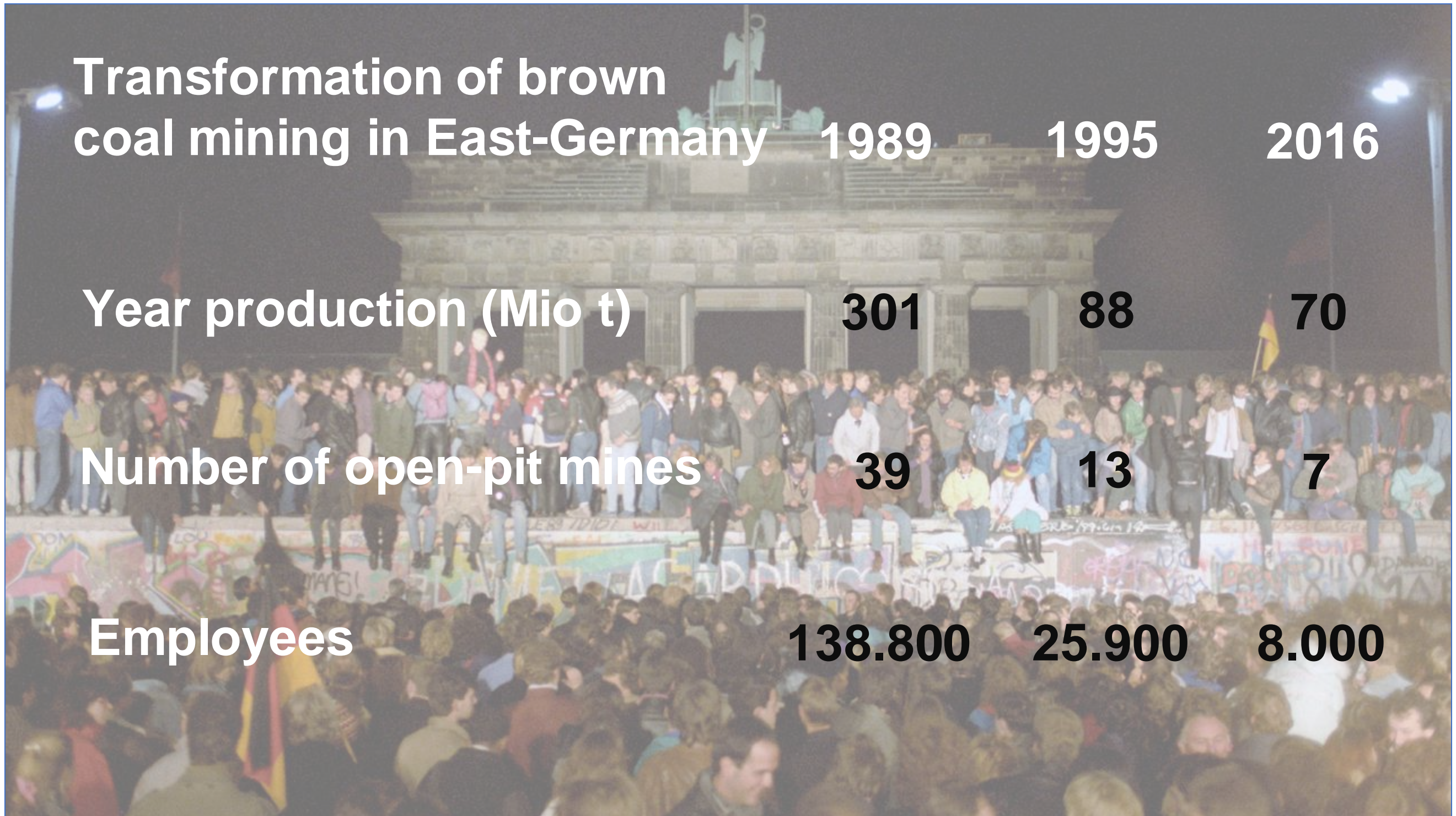
301 88 70

Number of open-pit mines

39 13 7

Employees

138.800 25.900 8.000



Innovation in lake-land: floating Architecture

